

CALL FOR APPLICATION --- — S+T+ARTS RESIDENCY

Deadline for submitting applications : october 15, 2020





In facing the complexity of global challenges, creativity stands as one of the most effective tools to redesign and transform our societies. From this perspective, it is of great importance that we foster a renewed dialogue between science and the arts, the two dominant creative forces of society. Their role has always been that of understanding the world we live in and projecting us into the future. Art that experiments with new technologies is a tremendous engine for technological, social, economic and scientific innovation.

With this in mind, Fondation Fiminco, in partnership with the European S+T+ARTS (Science, Technology & the Arts) program and the Sony CSL Paris research laboratory (Computer Science Laboratories), is launching a call for applications from visual artists of all disciplines, from all over the world, to undertake a residency (creative research and production).

The framework of this residency is:

'Urban mobility: exploring new imaginaries'

The selected artist will undertake a 5-month residency—from January to May 2021—shared between Fondation Fiminco, located in Romainville (Seine-Saint-Denis), and the Sony CSL laboratory, located in Paris.

S+T+ARTS



S+T+ARTS is an initiative of the European Commission that seeks to foster alliances of technology and artistic practice that effectively implement European policy to nurture innovation that benefits the art world as well. S+T+ARTS focuses on people and projects that contribute to mastering the social, ecological and economic challenges faced by this continent.

Using disruptive methods of exploration and having a critical eye on the use of technologies, artists decisively raise awareness of the societal challenges and global concerns we are facing. S+T+ARTS is driven by the conviction that science and technology combined with an artistic viewpoint, opens valuable perspectives for research and business, through a holistic and human-centered approach.

More info : www.starts.eu

LA FONDATION — ————— FIMINCO

Each year, Fondation Fiminco welcomes 18 artists from around the world for an 11-month residency to support the development of their practice and research. In 2021, the Fondation will also welcome the laureate of the S+T+ARTS residency for a period of 5 months.

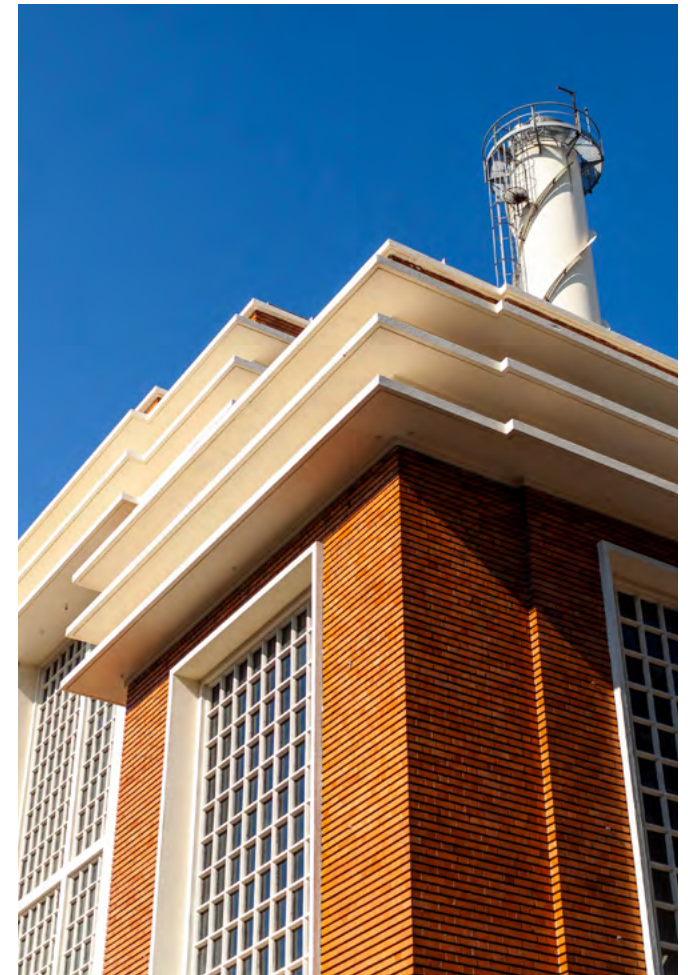
Fondation Fiminco has reinvigorated an exceptional industrial site in Romainville, just near Paris and accessible by metro, and transformed it into a hub for artists from around the world that is open to all. Designed for artists, this new place provides space, production capacities and support in order to create an ideal working environment, and to promote the encounter between all forms of art.

This new cultural district, inaugurated in October 2019, covers 11,000 m², with five separate buildings, including a monumental 14-meter-high boiler room has become the Fondation's exhibition space. This unique site brings together the Fondation's international artist residency, exhibition spaces, four art galleries - Air de Paris, Galerie Jocelyn Wolff, Galerie Sator and In Situ fabienne leclerc -, the association Jeune Création [Emerging Artist

Association], and the craftsman Laurel Parker Book, as well as the newly built storage facility of the Regional Contemporary Art Fund of Ile-de-France (FRAC Ile-de-France), which will open its doors in the fall of 2020 and feature a public engagement space. From the start of the 2020 school year, new partners: the Parsons School of Fashion and Design will move in and in 2021 two art galleries, Maëlle Galerie and Bonny Poon, and Après Midi Lab printers will also join.

The goal of the Fondation is not to establish or show a contemporary art collection, but to support artists throughout their creative process, without expectations, by supporting their professional development by providing connections with a network of organisations and key players in the Parisian art scene.

Find out more : www.fondationfiminco.com



SONY CSL PARIS



Sony CSL was founded in February 1988 in Tokyo. In 1996, this first experience gave birth to Sony CSL Paris, a small but booming research laboratory whose mission is the development of tools from complexity science, data science and artificial intelligence that investigate fundamental questions in various topics, such as language and communication systems, music and AI, sustainability, innovation dynamics and creativity.

CSL aims to represent a hub of high-level interdisciplinary researchers in the fields of Mathematics, Physics, Computer Science, Engineering and Natural Language Processing. Indeed, Sony CSL Paris plays a leading role in the areas it has chosen to be active in. It produces a steady stream of publications in the most prestigious journals and conferences. The lab is viewed as highly innovative and plays a leading role in European IT research.

The team involved in this project is the “Creativity, Innovation and Artificial Intelligence” group, which gathers vast scientific expertise in Machine Learning tools to study human mobility and to develop digital platforms that monitor and forecast the

performance of transport systems. The team actively collaborates with several institutions and policymakers working on urban mobility to help them explore possible solutions to improve urban environments (Rome Mobility Agency and City Council of Rome).

Apart from the Creativity Team, the lab offers a wide array of teams and expertise, ranging from synthetic music production to the development of AI tools and robots for sustainable farming. It is an inspiring place where ground-breaking research is carried out. Conveniently located at the heart of Paris, the lab is also equipped with a garden, a demo room to display installations and a studio with cutting edge tools such as a polymer 3D printer and all sorts of spatial and light sensors.

The team already developed and built several interactive installations (both physical and online) exposed during international exhibitions and events. These installations provided a way to disseminate the research findings to a wider non-technical audience in a playful and intuitive way.

More info : www.csl.sony.fr

URBAN MOBILITY: EXPLORING NEW IMAGINARIES ———

The S+T+ARTS residency will focus on the topic of urban mobility. Candidate artists are asked to respond to this framework.

Mobility, far from only being the movement from point A to point B, involves many opportunities in the fields of education, business or culture. Being able to move freely enriches one's own experience. The ability to move around sharpens the cultural, social and economic awareness of a population.

The term 'mobility' embraces a multiplicity of meanings, linked by the notions of change and opportunity. In this way, 'freedom of movement' was enshrined in the Universal Declaration of Human Rights, article 13. Since its inception, Europe was built on the principle of free movement of goods and people, however, freedom of movement is not always synonymous with equality: to be able to move and travel, one must have access to a means of locomotion, which limits the right to mobility, especially for the most vulnerable.

Mobility is a challenge in urban areas, some of which are undergoing profound changes linked to new transport networks. In addition, the Covid-19 pandemic has forced our European societies to be facing a reorganisation of work, as well as public transportation.

Going forward, these new ways of life and transportation will revolutionise the way in which individuals move around urban space and will foster a new relationship with the city. In addition, the challenge of ecological transition invites us to rethink the connections between cities and technologies, with an underlying concern of bringing people and sustainable development back to the heart of our discussions.

This call for applications invites artists to address these new urban challenges, and to imagine innovative scenarios and projects around mobility.



THE S+T+ARTS RESIDENCY X FONDATION FIMINCO X SONY CSL ———

The residency, which is in partnership with the European S+T+ARTS program and the SONY CSL Paris research laboratory, will take place between Fondation Fiminco's residency in Romainville (Seine-Saint-Denis) and the SONY CSL Laboratory located in the 5th arrondissement in Paris.

The artist will benefit from the support of all partners, with a range of 'tools' to assist him/her in the fruitful undertaking of their project.

FONDATION FIMINCO'S RESIDENCY

Modelled on a toolbox that artists can use according to their needs, Fondation Fiminco's residency is defined as an open space that adapts to the practices of artists without inhibiting them. The primary objective of the residency is to provide artists with a privileged environment that facilitates their work, research and production.

The selected artist will benefit from artistic and technical support according to his needs and in accordance with the project s/he wishes to develop: support for his/her artistic approach, technical support for production, promotion, and presentation, as well as administrative support, networking and meetings with professionals from the art world.

Two types of workshops are available to artists in residence at the Fondation: large collective and shared studios, and production workshops dedicated to specific art forms.

The selected artist of the S+T+ARTS residency will have a dedicated space in a collective studio with 18 resident artists, as well as his/her own work furniture (mobile table and storage unit). These studios are dedicated to mixed art practices, they are large open spaces in which several artists work.

The resident artist will also have access to specific production workshops within the residence: engraving, screen printing, photography, video, building workshop, etc. Depending on the workshop, the artist may benefit from the support of a workshop manager, in accordance with a work schedule established in advance with Fondation Fiminco. Workshop managers can also support the artist in learning new skills as required.

The residency project may be presented to the public as part of studio visits, and exhibited in the Fondation's spaces.



SONY CSL LABORATORY

Sony CSL activity focuses on the analyses of data, ranging from census data (population, jobs) to High-Frequency Location-Based (HFLB) data, i.e. GPS tracking collected via mobile phones apps. Data is analysed using state-of-the-art techniques borrowed from Machine Learning, Artificial Intelligence, and Statistical Inference. Researchers use these algorithms to extract relevant information or to devise models capable of making a forecast about the evolution of the system under study (e.g., how many people will be on the metro at a specific time).

At a more coarse scale, Sony CSL investigates the city component at their macroscopic level. In particular, the lab investigates whether or not different neighbourhoods of a city have a different vocation or functional role, and how they interplay. In this case, Sony CSL is interested in constructing forecasting models to predict the possible evolution of a city under different scenarios, with a 'what-if' approach in mind.

The overall aim is to establish a dialogue between art, science and the public through the development of experiments that explore new solutions and to integrate them into the

heart of society for the common good.

The artist will work in collaboration with Sony CSL researchers to understand their work and the issues they are facing, and to exchange ideas on relevant societal issues. The researchers will support the artist in their process, providing specific knowledge and technical skills when needed. The artist will be welcome to join Sony CSL team in the laboratory, who will be happy to organize a working space depending on his/her needs and the availability of Sony CSL.

S+T+ARTS RESIDENCY PROGRAM

The residency is supported by the S+T+ARTS program and will benefit from visibility and promotion through all S+T+ARTS channels: website, social media and the newsletter. The artist will also benefit from the connexion with the S+T+ARTS community (festivals, cultural organisations, research/creation labs, residency opportunities...) and from support of the S+T+ARTS organisation (project support, mentoring, and promotion).

PRACTICAL INFORMATIONS

SELECTION PROCESS

The artist will be selected via a written application, evaluated by a selection committee composed of representatives of each stakeholder (S+T+ARTS - Fondation Fiminco - Sony CSL), as well as professionals from art and technology networks.

The artist will be selected for a 5-month residency.

APPLICATION

The application can be written in French or in English, in a PDF format only, as a single file.

The application must be sent via email to:

residency@fondationfiminco.com

The application must include :

- 1 - A CV outlining the artist education and artistic background, as well as letters of recommendation (3 maximum)
- 2 - A project description, explaining the artist intentions and artistic research direction(s) on the framework of urban mobility, which the artist wishes to explore during his/her residency (maximum 2 pages)
- 3 - Visual support material (iconographic references, research, and sketches ...) of the project proposed for the residency (optional)
- 4 - A portfolio, presenting a selection of recent works representative of the artist's practice (20 pages maximum)
- 5 - Online links if the artist has participated in conferences or symposia
- 6 - The application may be accompanied by a short video (5 minutes maximum) in which the artist freely presents his/her career, his/her work and his/her project for the residency
- 7 - The application may contain publications, videos, sound files or any other documents that the artist deems valuable to communicate to the selection committee, via online links

TIMELINE

September 7 - October 15, 2020 : Call out period

October 15, 2020 : Deadline for submitting applications

October 2020 : Selection committee

November 2020 : Announcement of the selected artist

January - May 2021 : Residency period

GRANT AND PRODUCTION BUDGET

The selected artist will receive a grant of 7,000 euros (gross) for his/her personal living expenses during the 5-month residency. The artist will also be allocated a production budget of 5,000 euros.

PUBLIC PRESENTATION

The residency includes a public presentation of the project. It may take different forms depending on the artist's project (workshop, studio visit, an exhibition, a performance, conference, screening, etc.). During this public presentation, the artist will be able to present a prototype, a work step, or a finalised work, depending on the progress of the project at the end of the residency. The costs incurred for these moments of presentation will be covered by the Fondation Fiminco, within the limit of the provided budget.

LEGAL FRAMEWORK

A residency contract between Fondation Fiminco, Sony CSL and the artist will be signed upon starting the residency.

ACCOMMODATION

Fondation Fiminco can provide the artist with accommodation, with a room of 19 sqm. and shared living spaces (kitchens, lounge, laundry room) within the residency.

DURATION OF RESIDENCE

The duration of the residency is 5 months. The artist is expected, as far as possible, to make him/herself available for the full period of the residency.

PRODUCTION STUDIOS

A workspace will be allocated to the selected artist, within a shared studio with 3 other artists (approximately 30 m² per artist). The artist will also have access to the various workshops: screen printing, engraving, photography, construction and video.

TRANSPORT

Fondation Fiminco will cover a return trip from the artist's place of residence to Romainville.

CONTACT

Fondation d'entreprise Fiminco
43 rue de la Commune de Paris
93230 Romainville
France

www.fondationfiminco.com

residency@fondationfiminco.com



@fondationfiminco



@fondationfiminco



@ffiminco



S + T + ARTS

SCIENCE + TECHNOLOGY + ARTS



European
Commission

